






STANDARD NOTES:

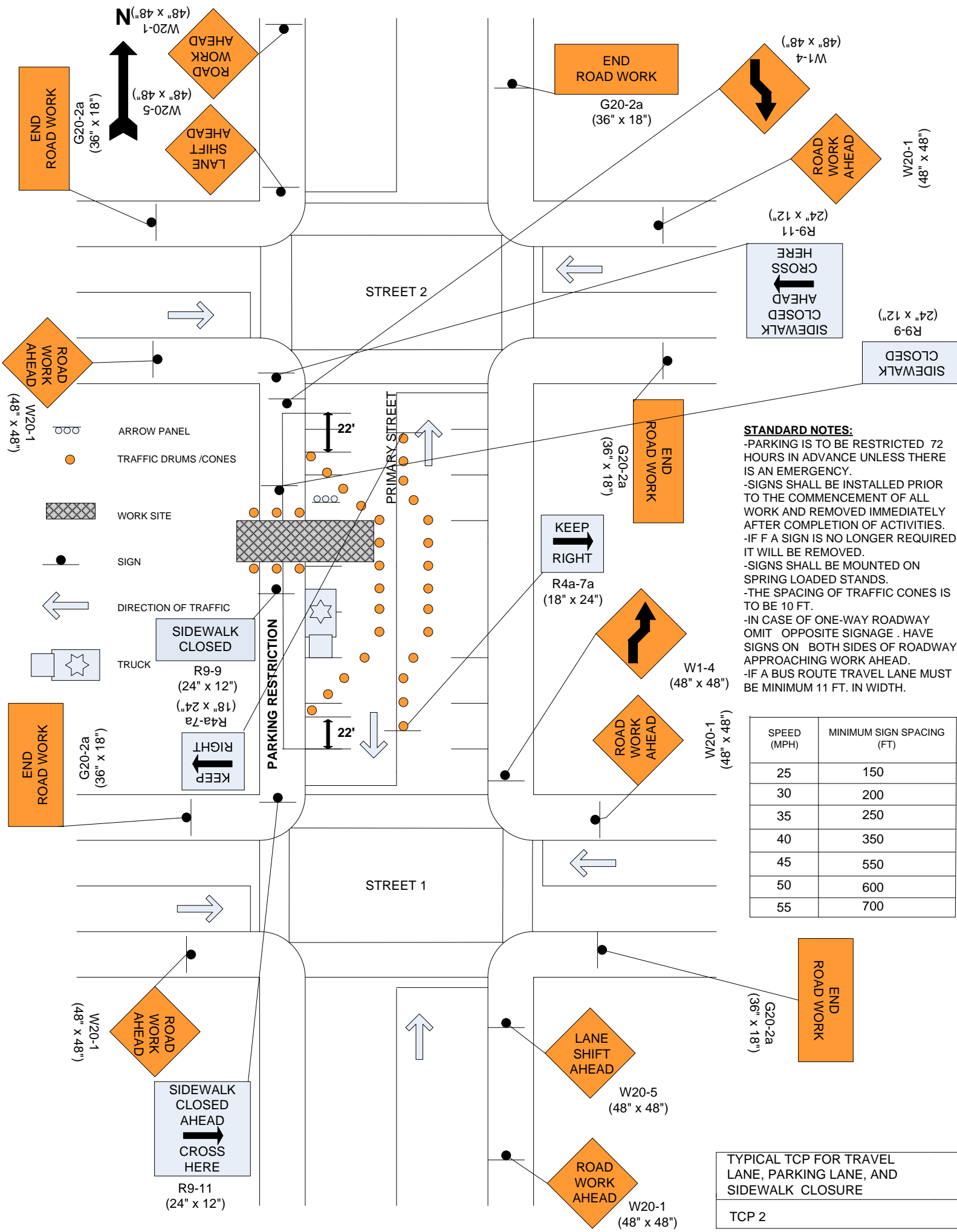
- PARKING IS TO BE RESTRICTED 72 HOURS IN ADVANCE UNLESS THERE IS AN EMERGENCY.
- SIGNS SHALL BE INSTALLED PRIOR TO THE COMMENCEMENT OF ALL WORK AND REMOVED IMMEDIATELY AFTER COMPLETION OF ACTIVITIES.
- IF A SIGN IS NO LONGER REQUIRED IT WILL BE REMOVED.
- SIGNS SHALL BE MOUNTED ON SPRING LOADED STANDS.
- THE SPACING OF TRAFFIC CONES IS TO BE 10 FT.
- IN CASE OF ONE-WAY ROADWAY OMIT OPPOSITE SIGNAGE . HAVE SIGNS ON BOTH SIDES OF ROADWAY APPROACHING WORK AHEAD.
- IF A BUS ROUTE TRAVEL LANE MUST BE MINIMUM 11 FT. IN WIDTH.

-  TRAFFIC DRUMS / CONES
-  WORK SITE
-  SIGN
-  DIRECTION OF TRAFFIC
-  TRUCK

SPEED (MPH)	MINIMUM SIGN SPACING (FT)
25	150
30	200
35	250
40	350
45	550
50	600
55	700

TYPICAL TCP FOR PARKING LANE CLOSURE

TCP 1



LEGEND:

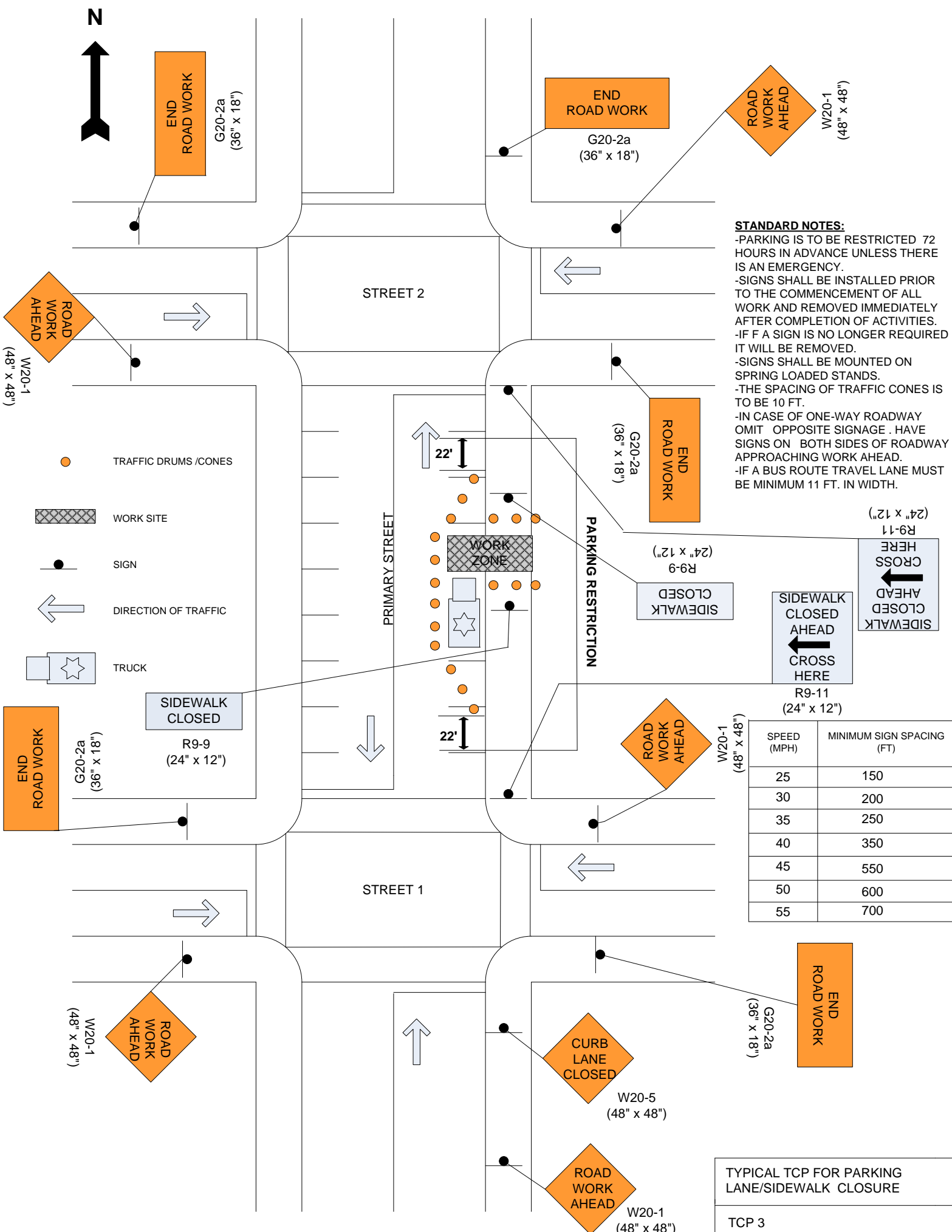
- ARROW PANEL
- TRAFFIC DRUMS / CONES
- WORK SITE
- SIGN
- DIRECTION OF TRAFFIC
- TRUCK

STANDARD NOTES:

- PARKING IS TO BE RESTRICTED 72 HOURS IN ADVANCE UNLESS THERE IS AN EMERGENCY.
- SIGNS SHALL BE INSTALLED PRIOR TO THE COMMENCEMENT OF ALL WORK AND REMOVED IMMEDIATELY AFTER COMPLETION OF ACTIVITIES.
- IF A SIGN IS NO LONGER REQUIRED IT WILL BE REMOVED.
- SIGNS SHALL BE MOUNTED ON SPRING LOADED STANDS.
- THE SPACING OF TRAFFIC CONES IS TO BE 10 FT.
- IN CASE OF ONE-WAY ROADWAY OMIT OPPOSITE SIGNAGE. HAVE SIGNS ON BOTH SIDES OF ROADWAY APPROACHING WORK AHEAD.
- IF A BUS ROUTE TRAVEL LANE MUST BE MINIMUM 11 FT. IN WIDTH.

SPEED (MPH)	MINIMUM SIGN SPACING (FT)
25	150
30	200
35	250
40	350
45	550
50	600
55	700

TYPICAL TCP FOR TRAVEL LANE, PARKING LANE, AND SIDEWALK CLOSURE
TCP 2



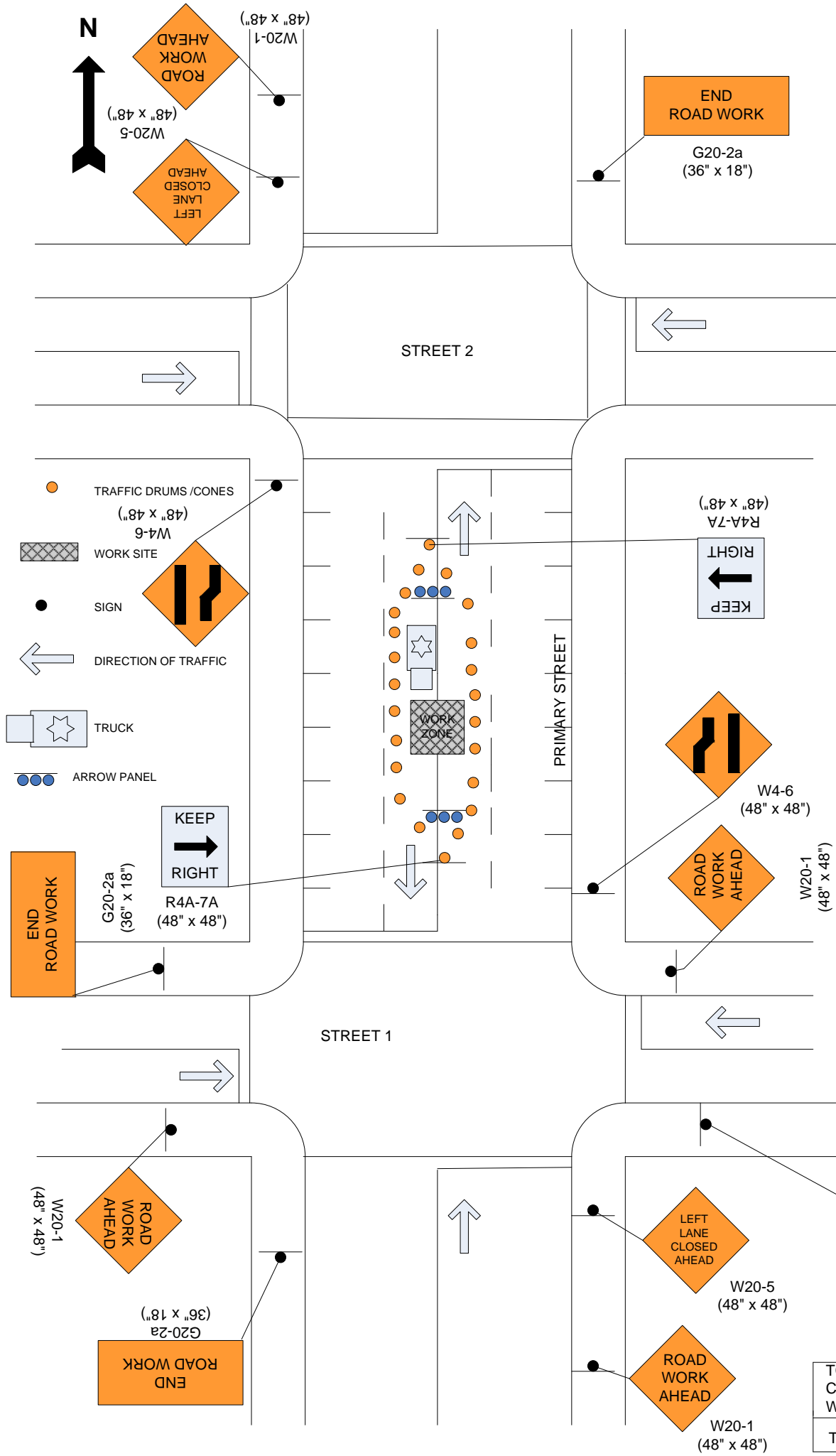
STANDARD NOTES:

- PARKING IS TO BE RESTRICTED 72 HOURS IN ADVANCE UNLESS THERE IS AN EMERGENCY.
- SIGNS SHALL BE INSTALLED PRIOR TO THE COMMENCEMENT OF ALL WORK AND REMOVED IMMEDIATELY AFTER COMPLETION OF ACTIVITIES.
- IF A SIGN IS NO LONGER REQUIRED IT WILL BE REMOVED.
- SIGNS SHALL BE MOUNTED ON SPRING LOADED STANDS.
- THE SPACING OF TRAFFIC CONES IS TO BE 10 FT.
- IN CASE OF ONE-WAY ROADWAY OMIT OPPOSITE SIGNAGE. HAVE SIGNS ON BOTH SIDES OF ROADWAY APPROACHING WORK AHEAD.
- IF A BUS ROUTE TRAVEL LANE MUST BE MINIMUM 11 FT. IN WIDTH.

SPEED (MPH)	MINIMUM SIGN SPACING (FT)
25	150
30	200
35	250
40	350
45	550
50	600
55	700

TYPICAL TCP FOR PARKING LANE/SIDEWALK CLOSURE

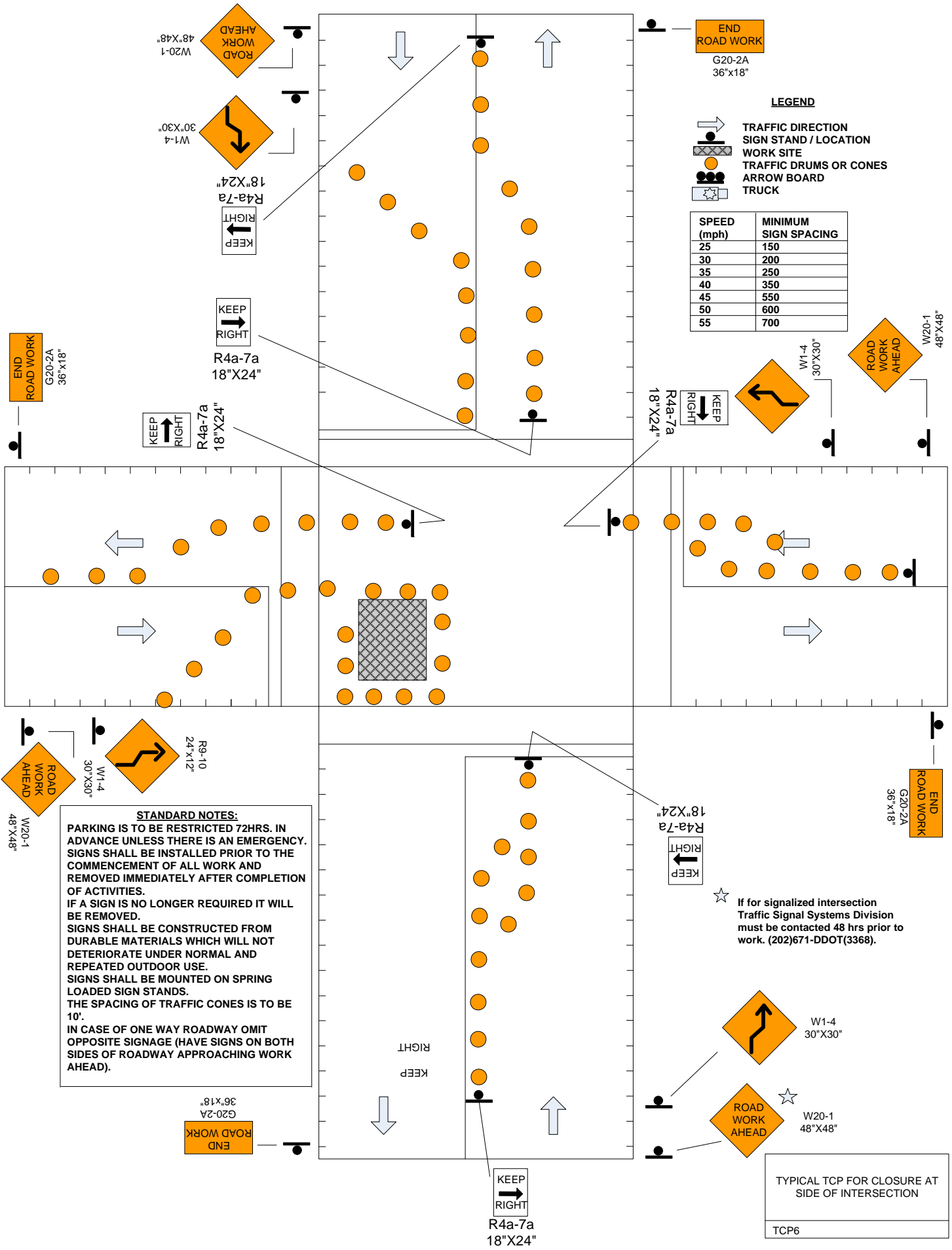
TCP 3



STANDARD NOTES:
 -PARKING IS TO BE RESTRICTED 72 HOURS IN ADVANCE UNLESS THERE IS AN EMERGENCY.
 -SIGNS SHALL BE INSTALLED PRIOR TO THE COMMENCEMENT OF ALL WORK AND REMOVED IMMEDIATELY AFTER COMPLETION OF ACTIVITIES.
 -IF A SIGN IS NO LONGER REQUIRED IT WILL BE REMOVED.
 -SIGNS SHALL BE MOUNTED ON SPRING LOADED STANDS.
 -THE SPACING OF TRAFFIC CONES IS TO BE 10 FT.
 -IN CASE OF ONE-WAY ROADWAY OMIT OPPOSITE SIGNAGE. HAVE SIGNS ON BOTH SIDES OF ROADWAY APPROACHING WORK AHEAD.
 -IF A BUS ROUTE TRAVEL LANE MUST BE MINIMUM 11 FT. IN WIDTH.

SPEED (MPH)	MINIMUM SIGN SPACING (FT)
25	150
30	200
35	250
40	350
45	550
50	600
55	700

TCP FOR INTERIOR LANE CLOSURE ON MULTILANE, TWO WAY STREET
 TCP 5



LEGEND

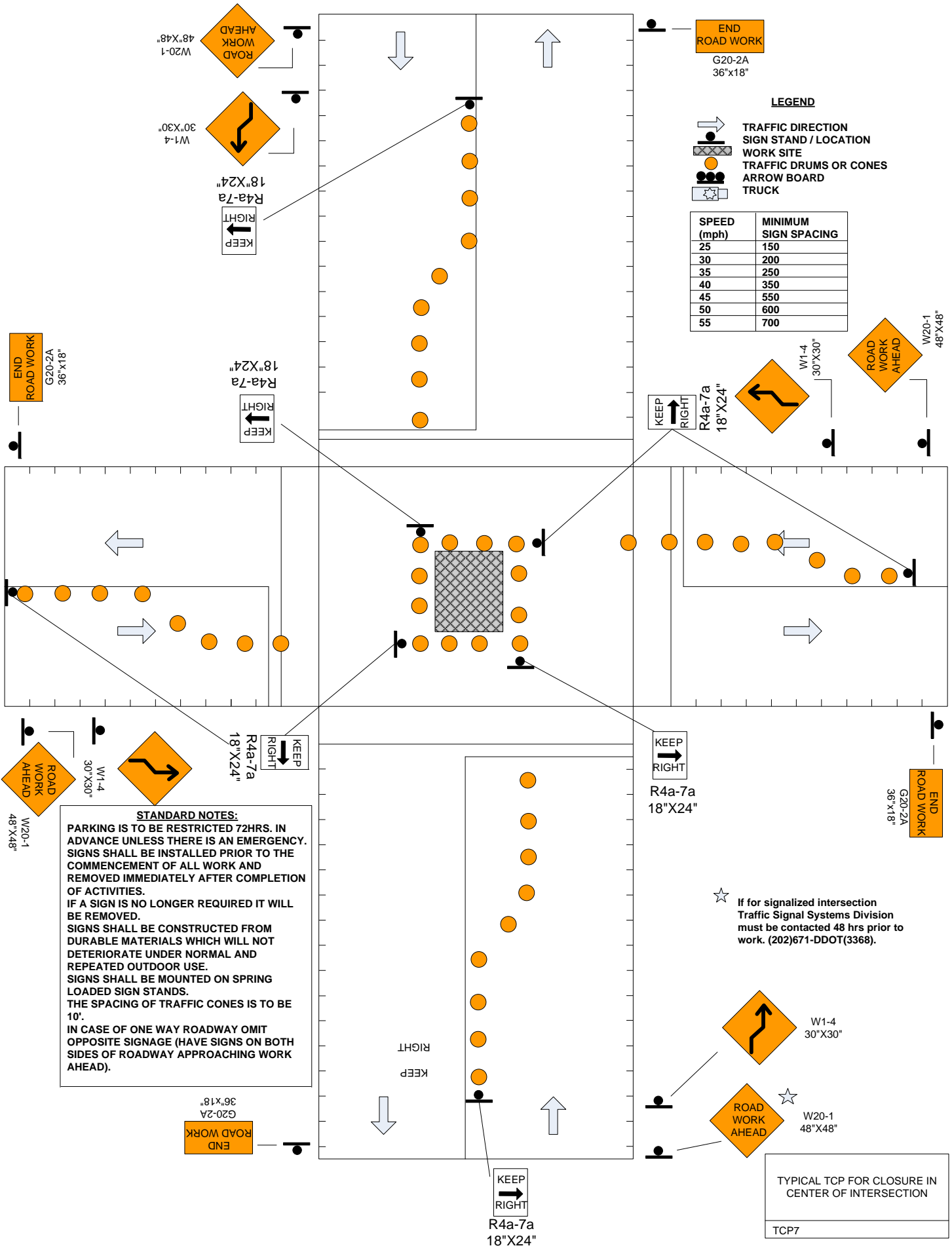
- TRAFFIC DIRECTION
- SIGN STAND / LOCATION
- WORK SITE
- TRAFFIC DRUMS OR CONES
- ARROW BOARD
- TRUCK

SPEED (mph)	MINIMUM SIGN SPACING
25	150
30	200
35	250
40	350
45	550
50	600
55	700

STANDARD NOTES:
 PARKING IS TO BE RESTRICTED 72HRS. IN ADVANCE UNLESS THERE IS AN EMERGENCY. SIGNS SHALL BE INSTALLED PRIOR TO THE COMMENCEMENT OF ALL WORK AND REMOVED IMMEDIATELY AFTER COMPLETION OF ACTIVITIES.
 IF A SIGN IS NO LONGER REQUIRED IT WILL BE REMOVED.
 SIGNS SHALL BE CONSTRUCTED FROM DURABLE MATERIALS WHICH WILL NOT DETERIORATE UNDER NORMAL AND REPEATED OUTDOOR USE.
 SIGNS SHALL BE MOUNTED ON SPRING LOADED SIGN STANDS.
 THE SPACING OF TRAFFIC CONES IS TO BE 10'.
 IN CASE OF ONE WAY ROADWAY OMIT OPPOSITE SIGNAGE (HAVE SIGNS ON BOTH SIDES OF ROADWAY APPROACHING WORK AHEAD).

☆ If for signalized intersection Traffic Signal Systems Division must be contacted 48 hrs prior to work. (202)671-DDOT(3368).

TYPICAL TCP FOR CLOSURE AT SIDE OF INTERSECTION
 TCP6



LEGEND

- TRAFFIC DIRECTION
- SIGN STAND / LOCATION
- WORK SITE
- TRAFFIC DRUMS OR CONES
- ARROW BOARD
- TRUCK

SPEED (mph)	MINIMUM SIGN SPACING
25	150
30	200
35	250
40	350
45	550
50	600
55	700

STANDARD NOTES:
 PARKING IS TO BE RESTRICTED 72HRS. IN ADVANCE UNLESS THERE IS AN EMERGENCY. SIGNS SHALL BE INSTALLED PRIOR TO THE COMMENCEMENT OF ALL WORK AND REMOVED IMMEDIATELY AFTER COMPLETION OF ACTIVITIES.
 IF A SIGN IS NO LONGER REQUIRED IT WILL BE REMOVED.
 SIGNS SHALL BE CONSTRUCTED FROM DURABLE MATERIALS WHICH WILL NOT DETERIORATE UNDER NORMAL AND REPEATED OUTDOOR USE.
 SIGNS SHALL BE MOUNTED ON SPRING LOADED SIGN STANDS.
 THE SPACING OF TRAFFIC CONES IS TO BE 10'.
 IN CASE OF ONE WAY ROADWAY OMIT OPPOSITE SIGNAGE (HAVE SIGNS ON BOTH SIDES OF ROADWAY APPROACHING WORK AHEAD).

☆ If for signalized intersection Traffic Signal Systems Division must be contacted 48 hrs prior to work. (202)671-DDOT(3368).

TYPICAL TCP FOR CLOSURE IN CENTER OF INTERSECTION

TCP7

N



STANDARD NOTES:

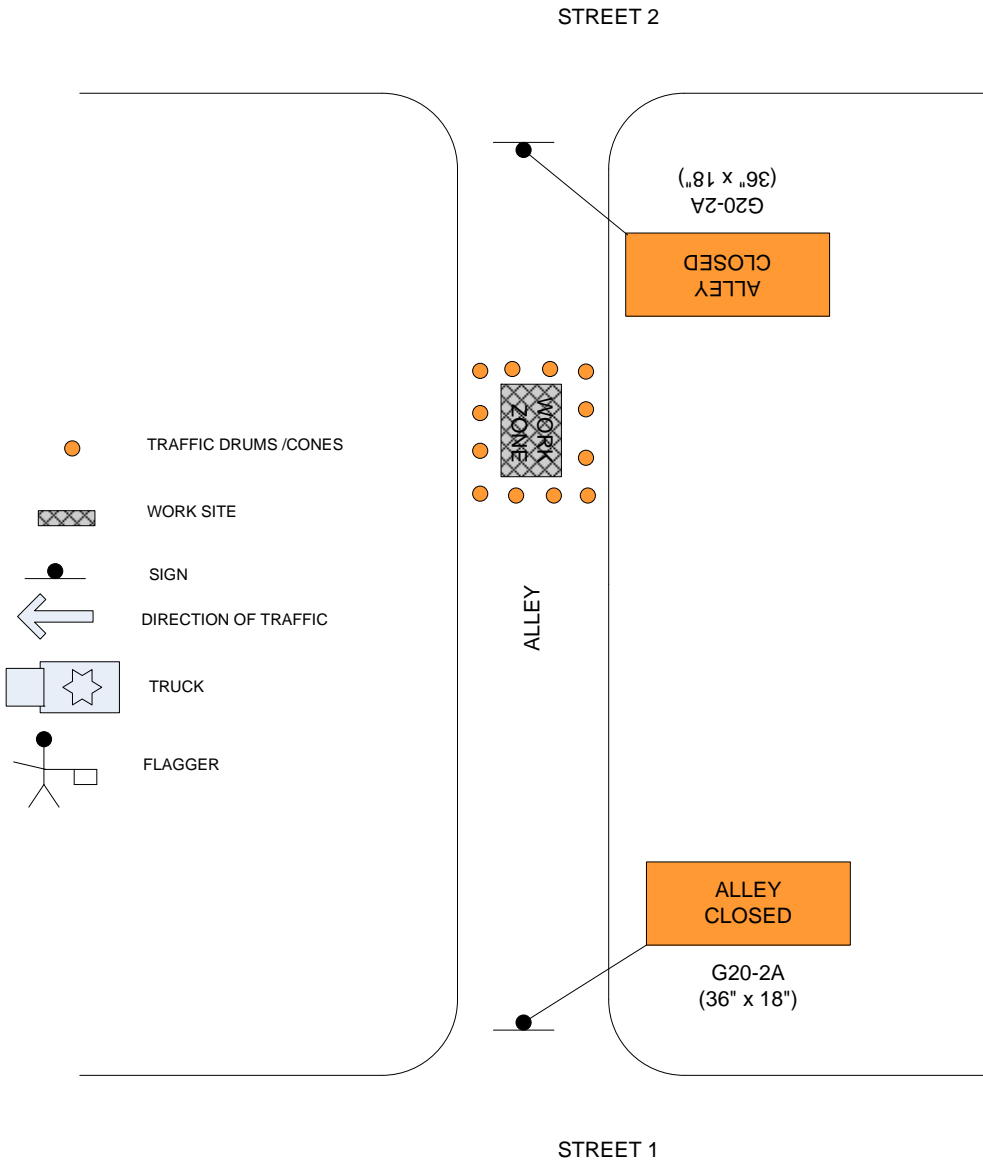
- PARKING IS TO BE RESTRICTED 72 HOURS IN ADVANCE UNLESS THERE IS AN EMERGENCY.
- SIGNS SHALL BE INSTALLED PRIOR TO THE COMMENCEMENT OF ALL WORK AND REMOVED IMMEDIATELY AFTER COMPLETION OF ACTIVITIES.
- IF A SIGN IS NO LONGER REQUIRED IT WILL BE REMOVED.
- SIGNS SHALL BE MOUNTED ON SPRING LOADED STANDS.
- THE SPACING OF TRAFFIC CONES IS TO BE 10 FT.
- IN CASE OF ONE-WAY ROADWAY OMIT OPPOSITE SIGNAGE . HAVE SIGNS ON BOTH SIDES OF ROADWAY APPROACHING WORK AHEAD.
- IF A BUS ROUTE TRAVEL LANE MUST BE MINIMUM 11 FT. IN WIDTH.
- *FLAGGERS MUST HAVE ELECTRONIC COMMUNICATION.
- *STOP/SLOW SIGN SHOULD BE MOUNTED ON A 5 FT. POLE.



SPEED (MPH)	MINIMUM SIGN SPACING (FT)
25	150
30	200
35	250
40	350
45	550
50	600
55	700

- TRAFFIC DRUMS / CONES
- WORK SITE
- SIGN
- DIRECTION OF TRAFFIC
- TRUCK
- FLAGGER

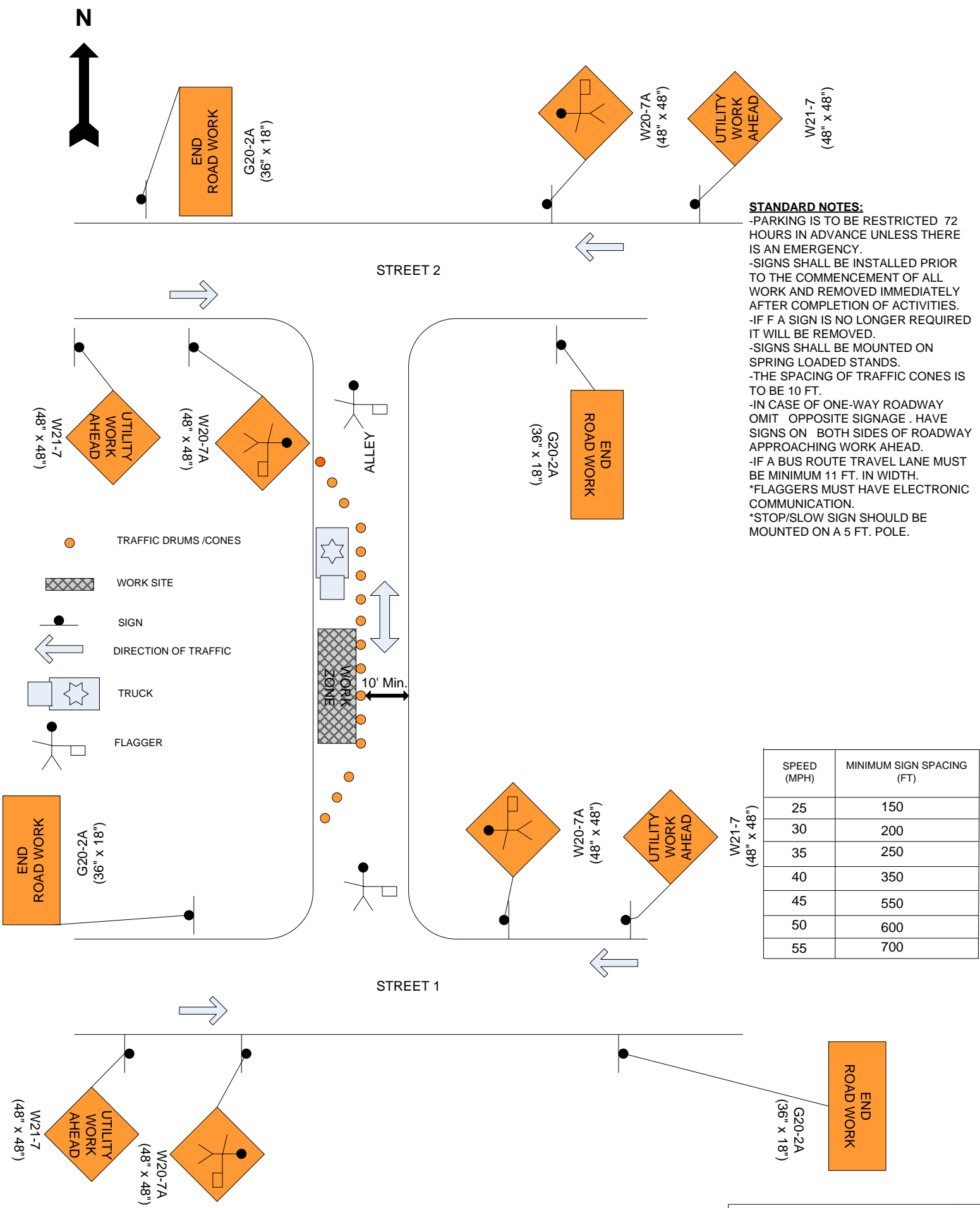
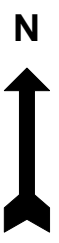
LANE CLOSURE ON TWO-WAY ROAD AND NO EXISTING PARKING W/FLAGGERS
TCP 8



STANDARD NOTES:

- PARKING IS TO BE RESTRICTED 72 HOURS IN ADVANCE UNLESS THERE IS AN EMERGENCY.
- SIGNS SHALL BE INSTALLED PRIOR TO THE COMMENCEMENT OF ALL WORK AND REMOVED IMMEDIATELY AFTER COMPLETION OF ACTIVITIES.
- IF A SIGN IS NO LONGER REQUIRED IT WILL BE REMOVED.
- SIGNS SHALL BE MOUNTED ON SPRING LOADED STANDS.
- THE SPACING OF TRAFFIC CONES IS TO BE 10 FT.
- IN CASE OF ONE-WAY ROADWAY OMIT OPPOSITE SIGNAGE . HAVE SIGNS ON BOTH SIDES OF ROADWAY APPROACHING WORK AHEAD.
- IF A BUS ROUTE TRAVEL LANE MUST BE MINIMUM 11 FT. IN WIDTH.
- *FLAGGERS MUST HAVE ELECTRONIC COMMUNICATION.
- *STOP/SLOW SIGN SHOULD BE MOUNTED ON A 5 FT. POLE.
- *MUST HAVE FIRE MARSHALL APPROVAL PRIOR TO ANY ROAD CLOSURES.**

SPEED (MPH)	MINIMUM SIGN SPACING (FT)
25	150
30	200
35	250
40	350
45	550
50	600
55	700



- STANDARD NOTES:**
- PARKING IS TO BE RESTRICTED 72 HOURS IN ADVANCE UNLESS THERE IS AN EMERGENCY.
 - SIGNS SHALL BE INSTALLED PRIOR TO THE COMMENCEMENT OF ALL WORK AND REMOVED IMMEDIATELY AFTER COMPLETION OF ACTIVITIES.
 - IF A SIGN IS NO LONGER REQUIRED IT WILL BE REMOVED.
 - SIGNS SHALL BE MOUNTED ON SPRING LOADED STANDS.
 - THE SPACING OF TRAFFIC CONES IS TO BE 10 FT.
 - IN CASE OF ONE-WAY ROADWAY OMIT OPPOSITE SIGNAGE . HAVE SIGNS ON BOTH SIDES OF ROADWAY APPROACHING WORK AHEAD.
 - IF A BUS ROUTE TRAVEL LANE MUST BE MINIMUM 11 FT. IN WIDTH.
 - *FLAGGERS MUST HAVE ELECTRONIC COMMUNICATION.
 - *STOP/SLOW SIGN SHOULD BE MOUNTED ON A 5 FT. POLE.

SPEED (MPH)	MINIMUM SIGN SPACING (FT)
25	150
30	200
35	250
40	350
45	550
50	600
55	700

TYPICAL TCP FOR MAINTAINING THRU TRAFFIC IN ALLEY

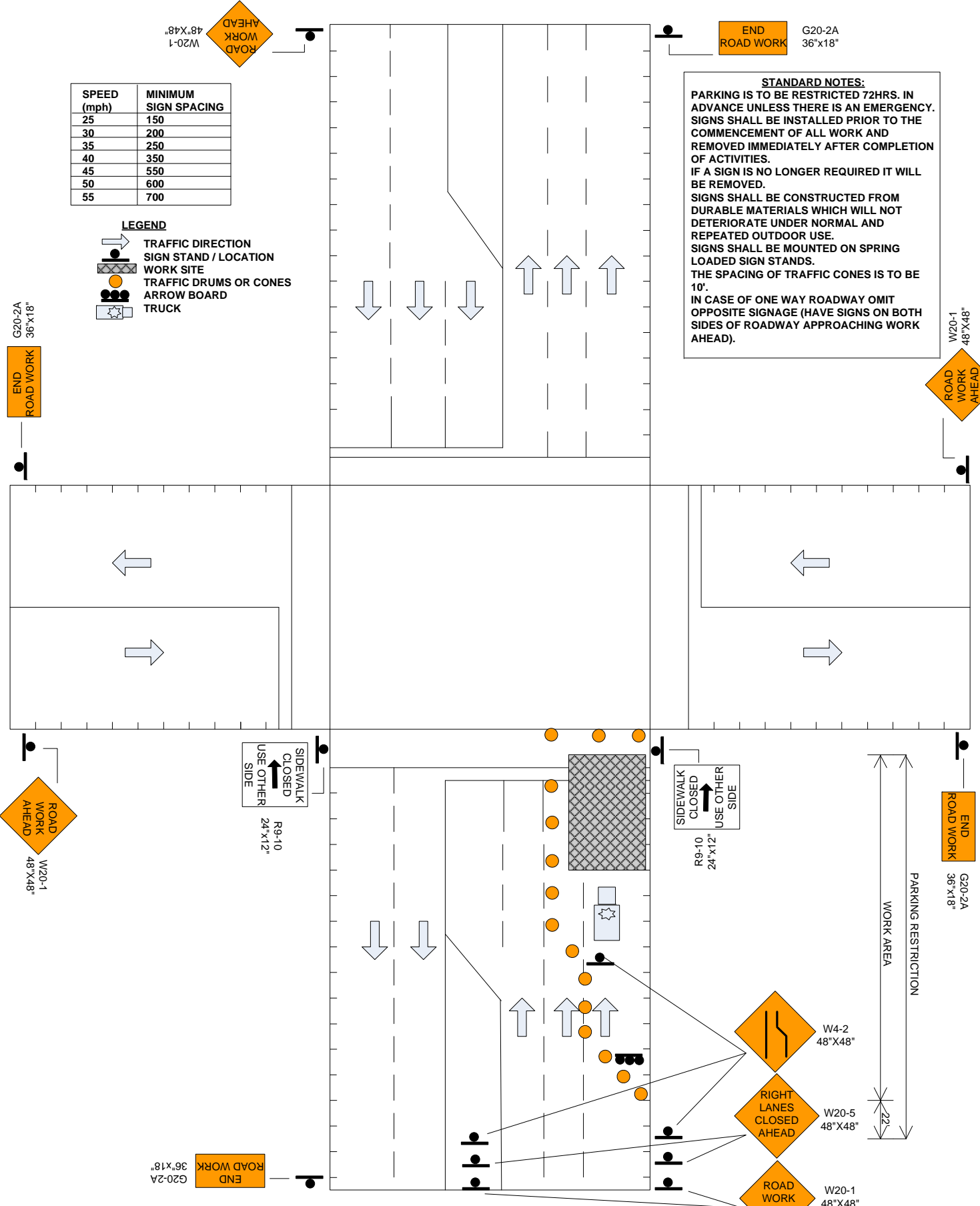
TCP 10

SPEED (mph)	MINIMUM SIGN SPACING
25	150
30	200
35	250
40	350
45	550
50	600
55	700

LEGEND

- TRAFFIC DIRECTION
- SIGN STAND / LOCATION
- WORK SITE
- TRAFFIC DRUMS OR CONES
- ARROW BOARD
- TRUCK







STANDARD NOTES:
 PARKING IS TO BE RESTRICTED 72HRS. IN ADVANCE UNLESS THERE IS AN EMERGENCY. SIGNS SHALL BE INSTALLED PRIOR TO THE COMMENCEMENT OF ALL WORK AND REMOVED IMMEDIATELY AFTER COMPLETION OF ACTIVITIES.
 IF A SIGN IS NO LONGER REQUIRED IT WILL BE REMOVED.
 SIGNS SHALL BE CONSTRUCTED FROM DURABLE MATERIALS WHICH WILL NOT DETERIORATE UNDER NORMAL AND REPEATED OUTDOOR USE.
 SIGNS SHALL BE MOUNTED ON SPRING LOADED SIGN STANDS.
 THE SPACING OF TRAFFIC CONES IS TO BE 10'.
 IN CASE OF ONE WAY ROADWAY OMIT OPPOSITE SIGNAGE (HAVE SIGNS ON BOTH SIDES OF ROADWAY APPROACHING WORK AREA).



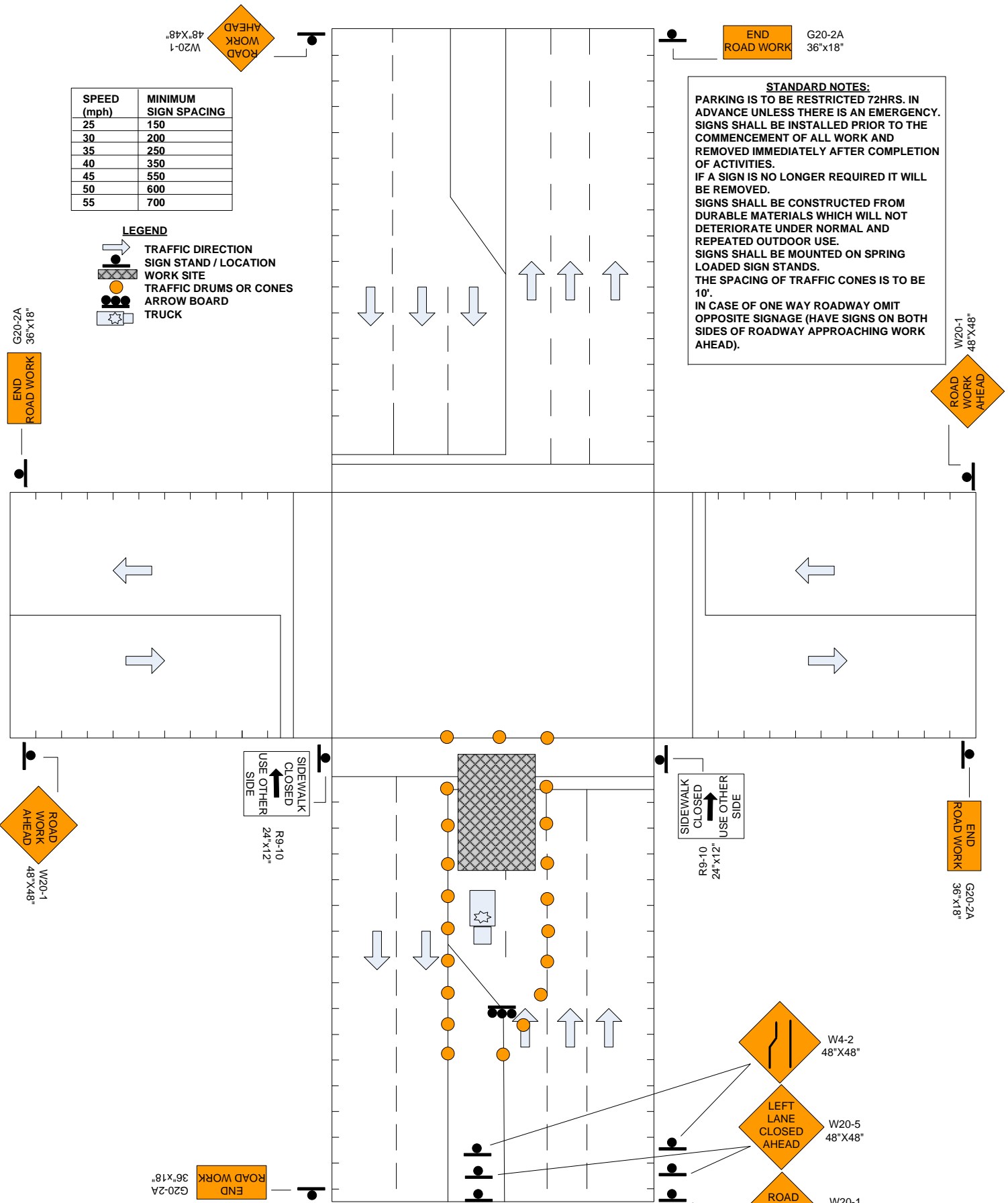
RIGHT LANE CLOSURES WITH NO PARKING PERMITTED
 TCP11

SPEED (mph)	MINIMUM SIGN SPACING
25	150
30	200
35	250
40	350
45	550
50	600
55	700

LEGEND

-  TRAFFIC DIRECTION
-  SIGN STAND / LOCATION
-  WORK SITE
-  TRAFFIC DRUMS OR CONES
-  ARROW BOARD
-  TRUCK

STANDARD NOTES:
 PARKING IS TO BE RESTRICTED 72HRS. IN ADVANCE UNLESS THERE IS AN EMERGENCY. SIGNS SHALL BE INSTALLED PRIOR TO THE COMMENCEMENT OF ALL WORK AND REMOVED IMMEDIATELY AFTER COMPLETION OF ACTIVITIES.
 IF A SIGN IS NO LONGER REQUIRED IT WILL BE REMOVED.
 SIGNS SHALL BE CONSTRUCTED FROM DURABLE MATERIALS WHICH WILL NOT DETERIORATE UNDER NORMAL AND REPEATED OUTDOOR USE.
 SIGNS SHALL BE MOUNTED ON SPRING LOADED SIGN STANDS.
 THE SPACING OF TRAFFIC CONES IS TO BE 10'.
 IN CASE OF ONE WAY ROADWAY OMIT OPPOSITE SIGNAGE (HAVE SIGNS ON BOTH SIDES OF ROADWAY APPROACHING WORK AHEAD).



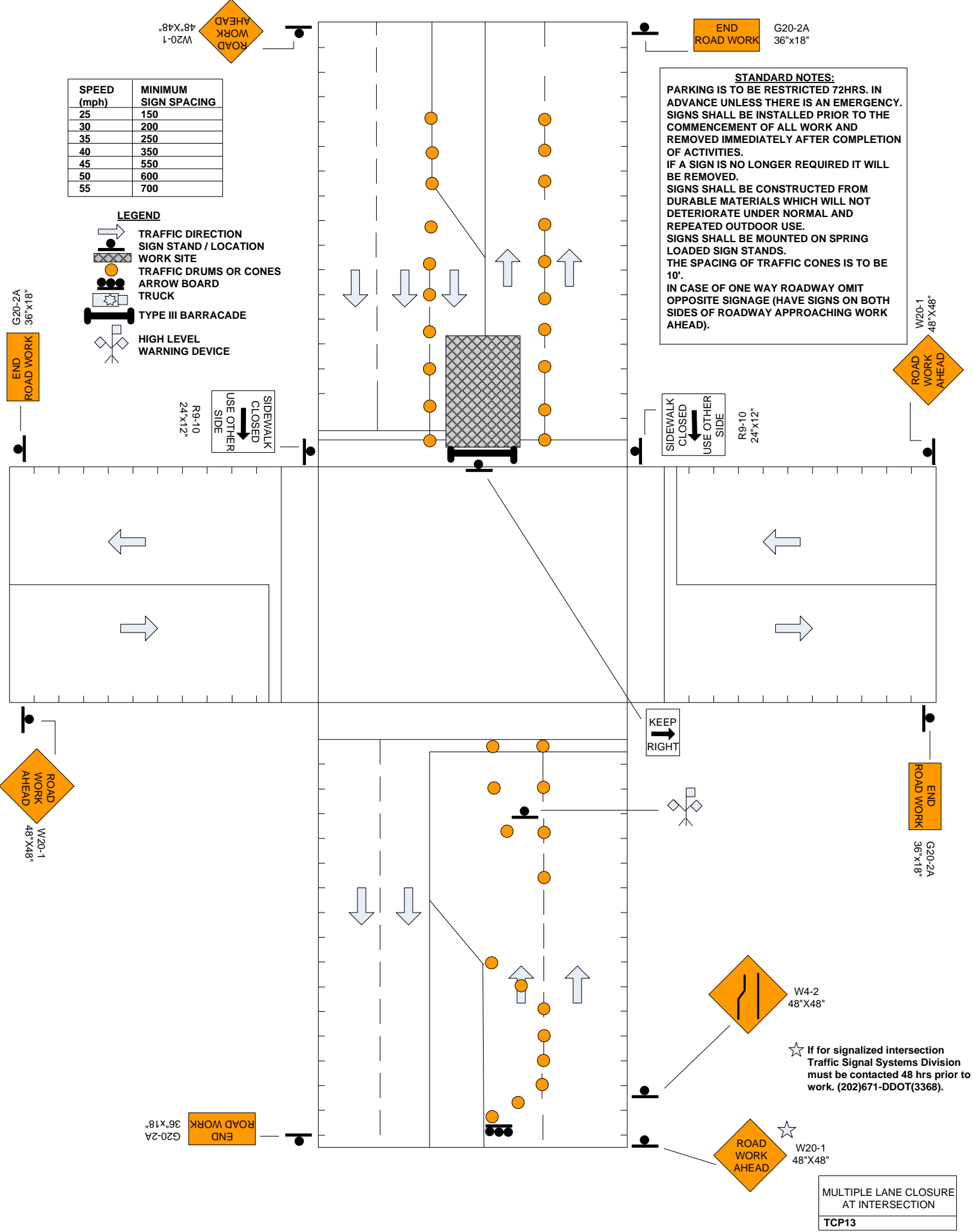
APPROACHING LEFT LANE CLOSURE WITH PARKING PERMITTED
TCP12

SPEED (mph)	MINIMUM SIGN SPACING
25	150
30	200
35	250
40	350
45	550
50	600
55	700

LEGEND

- TRAFFIC DIRECTION
- SIGN STAND / LOCATION
- WORK SITE
- TRAFFIC DRUMS OR CONES
- ARROW BOARD
- TRUCK
- TYPE III BARRICADE
- HIGH LEVEL WARNING DEVICE

STANDARD NOTES:
 PARKING IS TO BE RESTRICTED 72HRS. IN ADVANCE UNLESS THERE IS AN EMERGENCY. SIGNS SHALL BE INSTALLED PRIOR TO THE COMMENCEMENT OF ALL WORK AND REMOVED IMMEDIATELY AFTER COMPLETION OF ACTIVITIES.
 IF A SIGN IS NO LONGER REQUIRED IT WILL BE REMOVED.
 SIGNS SHALL BE CONSTRUCTED FROM DURABLE MATERIALS WHICH WILL NOT DETERIORATE UNDER NORMAL AND REPEATED OUTDOOR USE.
 SIGNS SHALL BE MOUNTED ON SPRING LOADED SIGN STANDS.
 THE SPACING OF TRAFFIC CONES IS TO BE 10'.
 IN CASE OF ONE WAY ROADWAY OMIT OPPOSITE SIGNAGE (HAVE SIGNS ON BOTH SIDES OF ROADWAY APPROACHING WORK AHEAD).



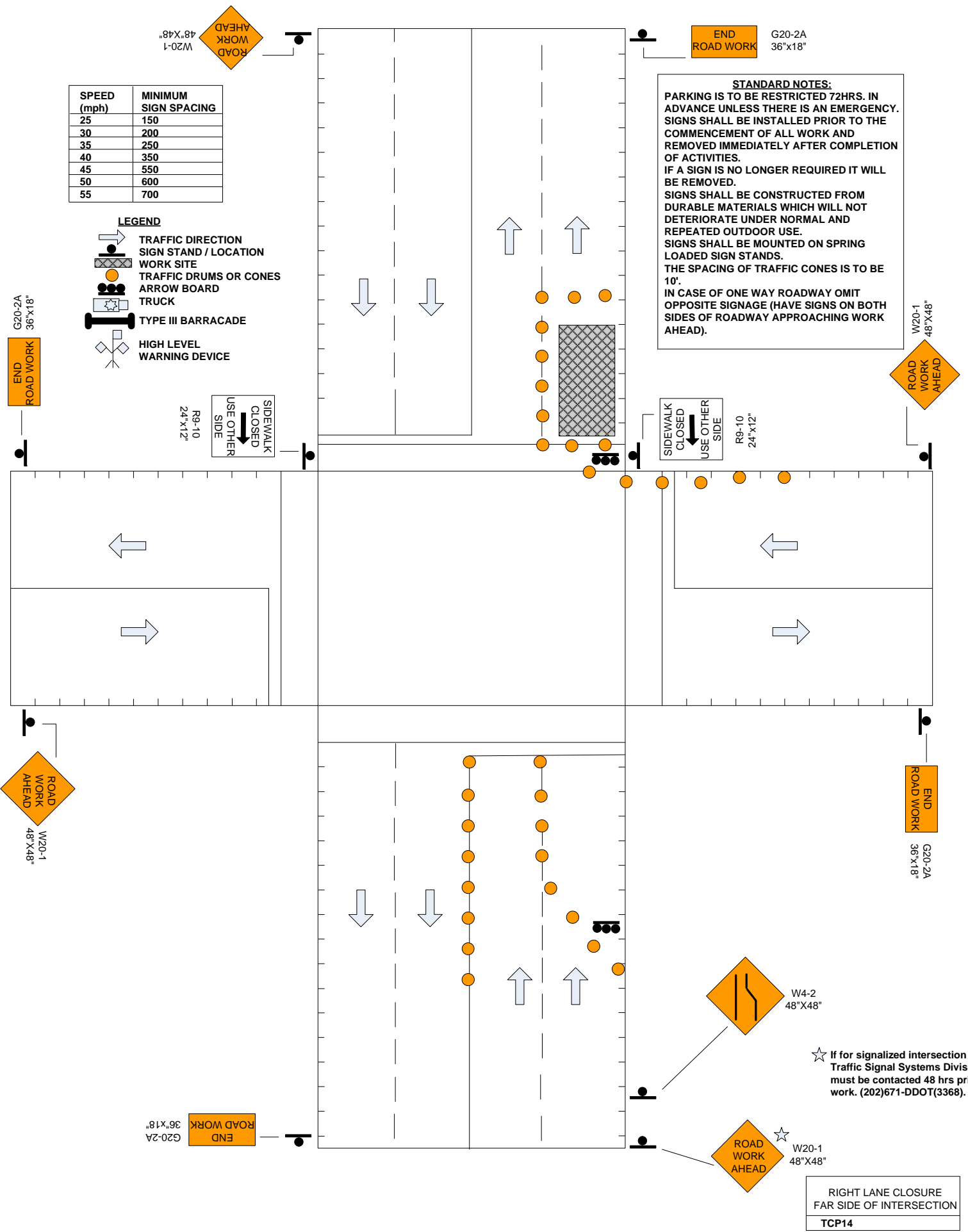
MULTIPLE LANE CLOSURE
 AT INTERSECTION
 TCP13

SPEED (mph)	MINIMUM SIGN SPACING
25	150
30	200
35	250
40	350
45	550
50	600
55	700

LEGEND

- TRAFFIC DIRECTION
- SIGN STAND / LOCATION
- WORK SITE
- TRAFFIC DRUMS OR CONES
- ARROW BOARD
- TRUCK
- TYPE III BARRICADE
- HIGH LEVEL WARNING DEVICE

STANDARD NOTES:
 PARKING IS TO BE RESTRICTED 72HRS. IN ADVANCE UNLESS THERE IS AN EMERGENCY. SIGNS SHALL BE INSTALLED PRIOR TO THE COMMENCEMENT OF ALL WORK AND REMOVED IMMEDIATELY AFTER COMPLETION OF ACTIVITIES.
 IF A SIGN IS NO LONGER REQUIRED IT WILL BE REMOVED.
 SIGNS SHALL BE CONSTRUCTED FROM DURABLE MATERIALS WHICH WILL NOT DETERIORATE UNDER NORMAL AND REPEATED OUTDOOR USE.
 SIGNS SHALL BE MOUNTED ON SPRING LOADED SIGN STANDS.
 THE SPACING OF TRAFFIC CONES IS TO BE 10'.
 IN CASE OF ONE WAY ROADWAY OMIT OPPOSITE SIGNAGE (HAVE SIGNS ON BOTH SIDES OF ROADWAY APPROACHING WORK AHEAD).



★ If for signalized intersection Traffic Signal Systems Division must be contacted 48 hrs prior to work. (202)671-DDOT(3368).

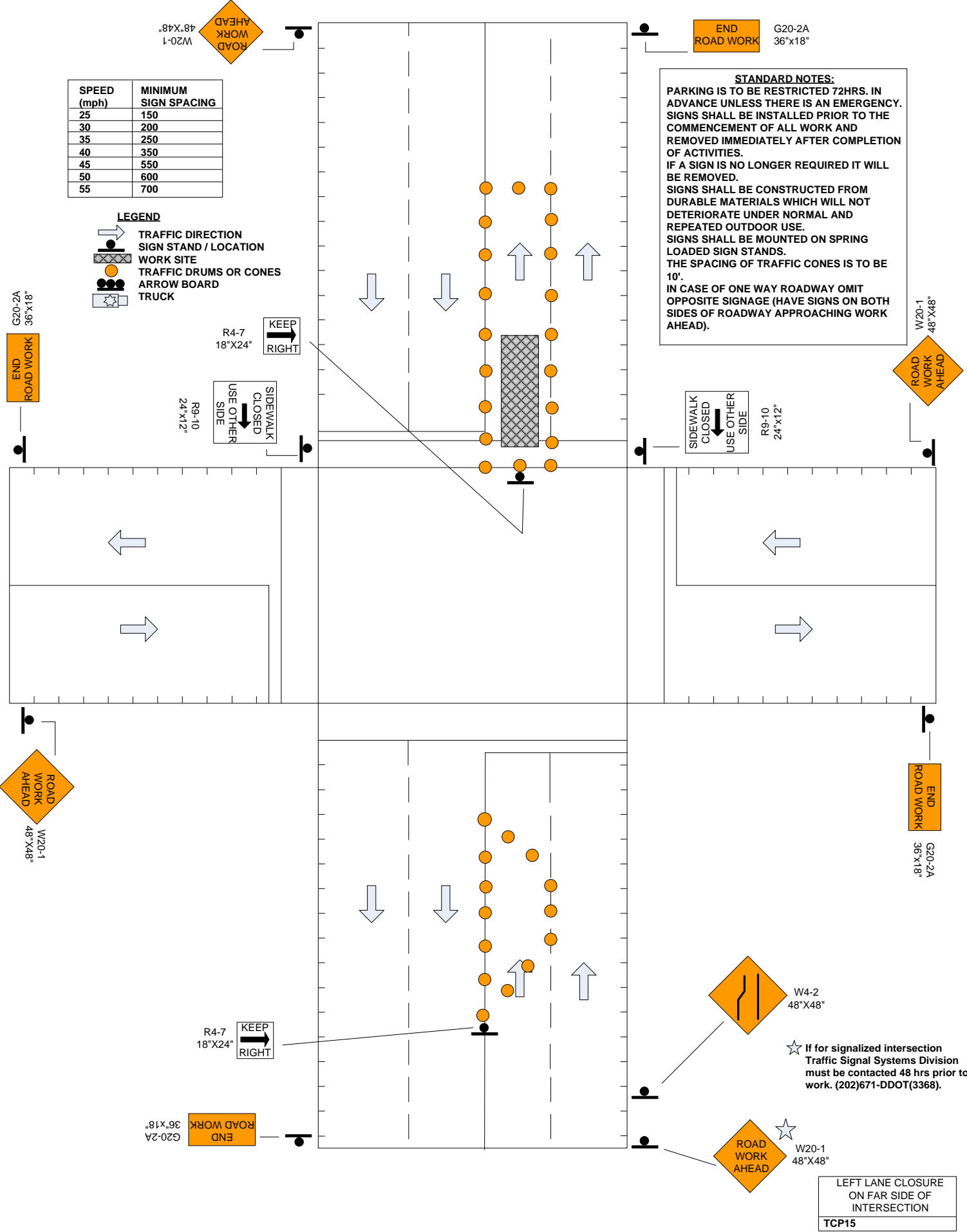
RIGHT LANE CLOSURE
 FAR SIDE OF INTERSECTION
TCP14

SPEED (mph)	MINIMUM SIGN SPACING
25	150
30	200
35	250
40	350
45	550
50	600
55	700

LEGEND

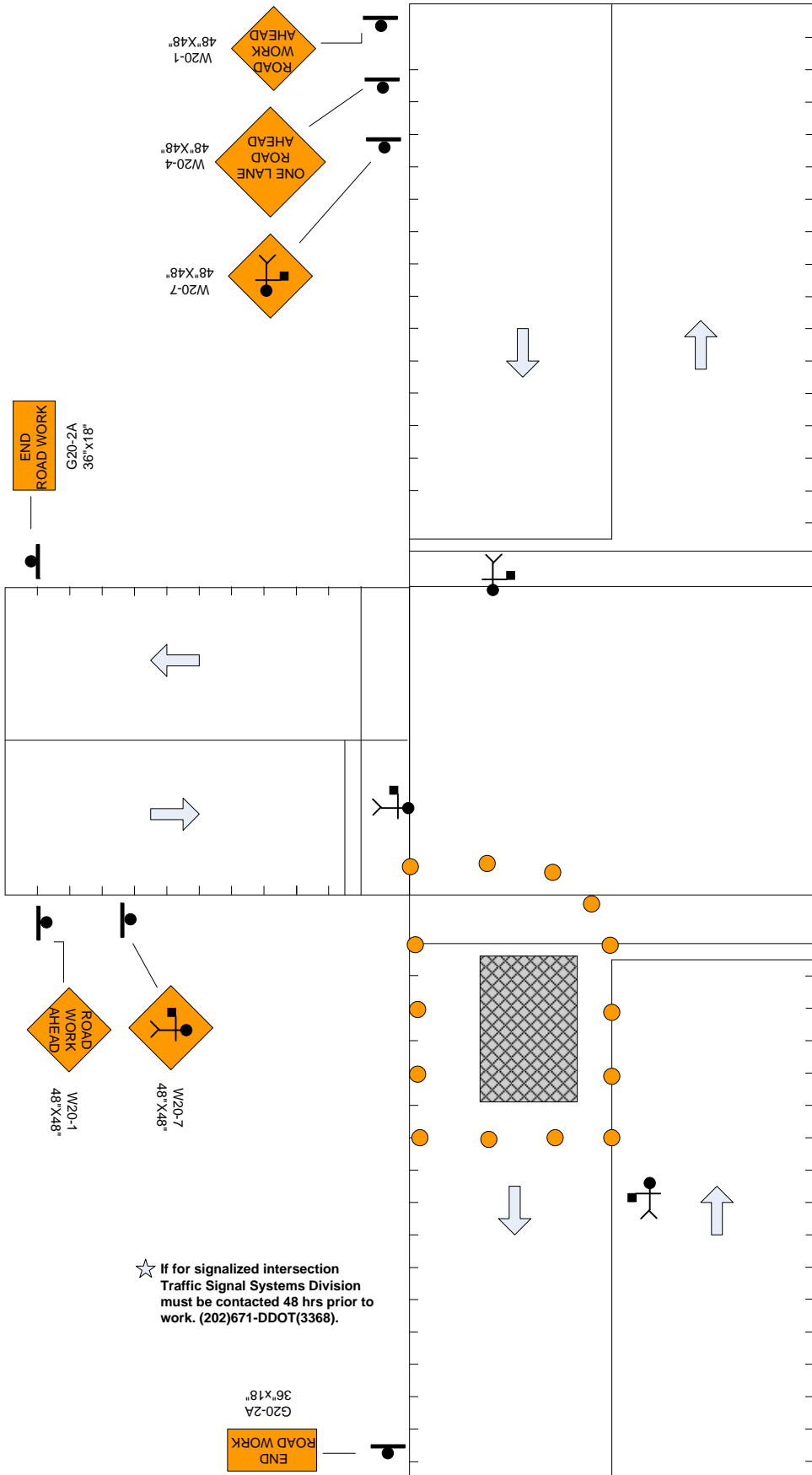
- TRAFFIC DIRECTION
- SIGN STAND / LOCATION
- WORK SITE
- TRAFFIC DRUMS OR CONES
- ARROW BOARD
- TRUCK

STANDARD NOTES:
 PARKING IS TO BE RESTRICTED 72HRS. IN ADVANCE UNLESS THERE IS AN EMERGENCY. SIGNS SHALL BE INSTALLED PRIOR TO THE COMMENCEMENT OF ALL WORK AND REMOVED IMMEDIATELY AFTER COMPLETION OF ACTIVITIES.
 IF A SIGN IS NO LONGER REQUIRED IT WILL BE REMOVED.
 SIGNS SHALL BE CONSTRUCTED FROM DURABLE MATERIALS WHICH WILL NOT DETERIORATE UNDER NORMAL AND REPEATED OUTDOOR USE.
 SIGNS SHALL BE MOUNTED ON SPRING LOADED SIGN STANDS.
 THE SPACING OF TRAFFIC CONES IS TO BE 10'.
 IN CASE OF ONE WAY ROADWAY OMIT OPPOSITE SIGNAGE (HAVE SIGNS ON BOTH SIDES OF ROADWAY APPROACHING WORK AHEAD).



LEFT LANE CLOSURE ON FAR SIDE OF INTERSECTION
 TCP15

☆ If for signalized intersection Traffic Signal Systems Division must be contacted 48 hrs prior to work. (202)671-DDOT(3368).



END ROAD WORK
G20-2A
36"x18"

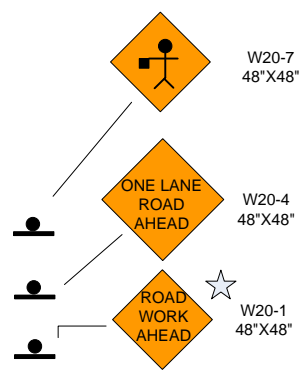
LEGEND

- TRAFFIC DIRECTION
- SIGN STAND / LOCATION
- WORK SITE
- TRAFFIC DRUMS OR CONES
- ARROW BOARD
- TRUCK
- FLAGGER / with stop/slow paddle. 24" sign on 6' pole.

SPEED (mph)	MINIMUM SIGN SPACING
25	150
30	200
35	250
40	350
45	550
50	600
55	700

STANDARD NOTES:
 PARKING IS TO BE RESTRICTED 72HRS. IN ADVANCE UNLESS THERE IS AN EMERGENCY. SIGNS SHALL BE INSTALLED PRIOR TO THE COMMENCEMENT OF ALL WORK AND REMOVED IMMEDIATELY AFTER COMPLETION OF ACTIVITIES.
 IF A SIGN IS NO LONGER REQUIRED IT WILL BE REMOVED.
 SIGNS SHALL BE CONSTRUCTED FROM DURABLE MATERIALS WHICH WILL NOT DETERIORATE UNDER NORMAL AND REPEATED OUTDOOR USE.
 SIGNS SHALL BE MOUNTED ON SPRING LOADED SIGN STANDS.
 THE SPACING OF TRAFFIC CONES IS TO BE 10'.
 IN CASE OF ONE WAY ROADWAY OMIT OPPOSITE SIGNAGE (HAVE SIGNS ON BOTH SIDES OF ROADWAY APPROACHING WORK AHEAD).

☆ If for signalized intersection Traffic Signal Systems Division must be contacted 48 hrs prior to work. (202)671-DDOT(3368).



FLAGGING CONTROL AT 3-LEG INTERSECTION (1)
TCP16

W20-1
48"X48"
ROAD WORK AHEAD

W20-4
48"X48"
ONE LANE ROAD AHEAD

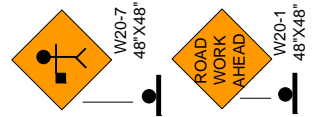
W20-7
48"X48"
ROAD WORK AHEAD

END ROAD WORK
G20-2A
36"X18"

LEGEND

- TRAFFIC DIRECTION
- SIGN STAND / LOCATION
- WORK SITE
- TRAFFIC DRUMS OR CONES
- ARROW BOARD
- TRUCK
- FLAGGER / with stop/slow paddle. 24" sign on 6' pole.

SPEED (mph)	MINIMUM SIGN SPACING
25	150
30	200
35	250
40	350
45	550
50	600
55	700

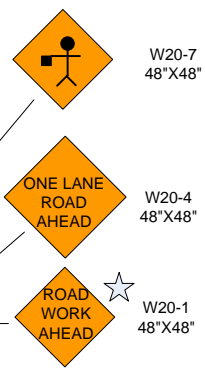


STANDARD NOTES:
 PARKING IS TO BE RESTRICTED 72HRS. IN ADVANCE UNLESS THERE IS AN EMERGENCY. SIGNS SHALL BE INSTALLED PRIOR TO THE COMMENCEMENT OF ALL WORK AND REMOVED IMMEDIATELY AFTER COMPLETION OF ACTIVITIES. IF A SIGN IS NO LONGER REQUIRED IT WILL BE REMOVED. SIGNS SHALL BE CONSTRUCTED FROM DURABLE MATERIALS WHICH WILL NOT DETERIORATE UNDER NORMAL AND REPEATED OUTDOOR USE. SIGNS SHALL BE MOUNTED ON SPRING LOADED SIGN STANDS. THE SPACING OF TRAFFIC CONES IS TO BE 10'. IN CASE OF ONE WAY ROADWAY OMIT OPPOSITE SIGNAGE (HAVE SIGNS ON BOTH SIDES OF ROADWAY APPROACHING WORK AHEAD).

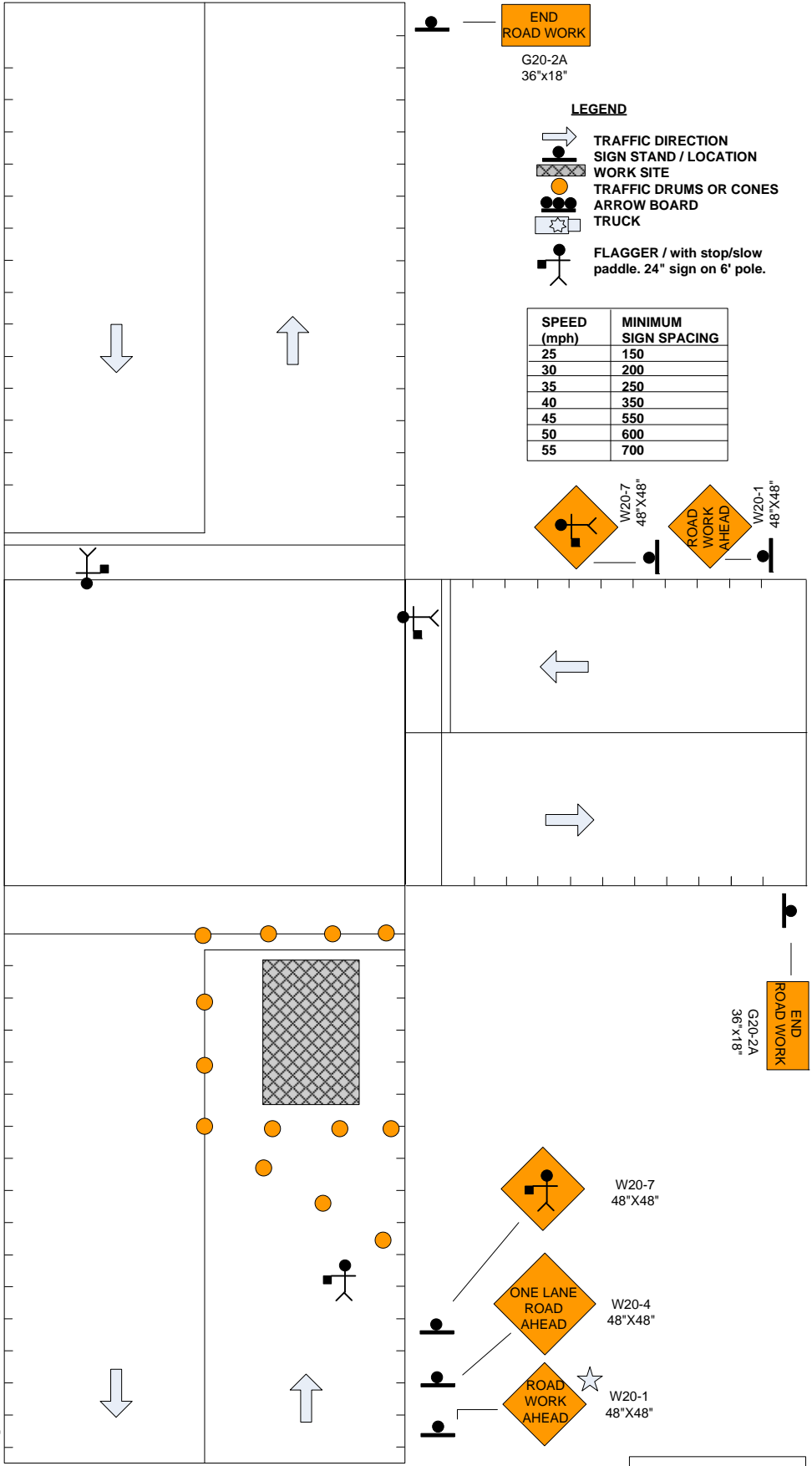
☆ If for signalized intersection Traffic Signal Systems Division must be contacted 48 hrs prior to work. (202)671-DDOT(3368).

END ROAD WORK
G20-2A
36"X18"

END ROAD WORK
G20-2A
36"X18"



FLAGGING CONTROL AT 3-LEG INTERSECTION (2)
TCP17

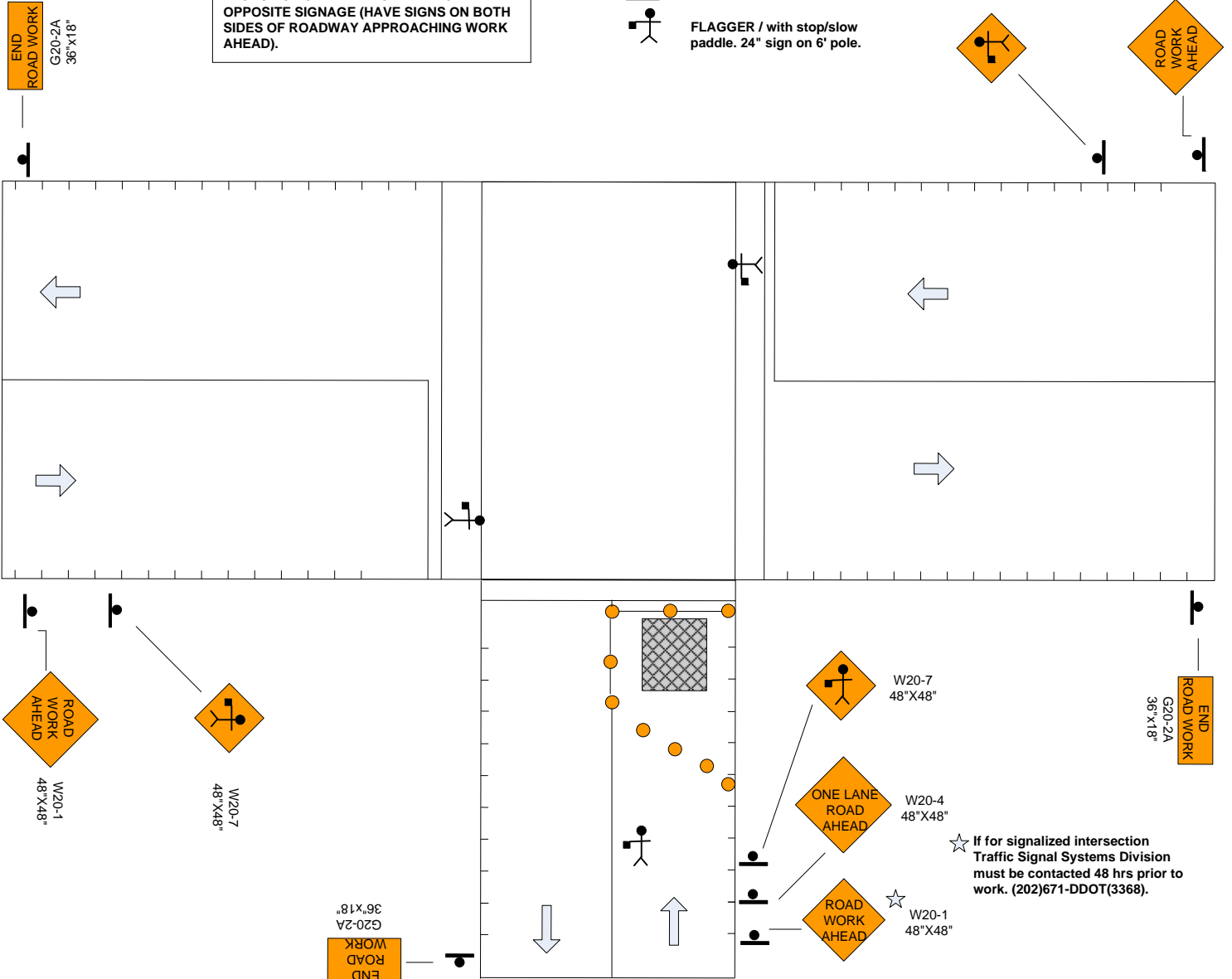


STANDARD NOTES:
 PARKING IS TO BE RESTRICTED 72HRS. IN ADVANCE UNLESS THERE IS AN EMERGENCY. SIGNS SHALL BE INSTALLED PRIOR TO THE COMMENCEMENT OF ALL WORK AND REMOVED IMMEDIATELY AFTER COMPLETION OF ACTIVITIES.
 IF A SIGN IS NO LONGER REQUIRED IT WILL BE REMOVED.
 SIGNS SHALL BE CONSTRUCTED FROM DURABLE MATERIALS WHICH WILL NOT DETERIORATE UNDER NORMAL AND REPEATED OUTDOOR USE.
 SIGNS SHALL BE MOUNTED ON SPRING LOADED SIGN STANDS.
 THE SPACING OF TRAFFIC CONES IS TO BE 10'.
 IN CASE OF ONE WAY ROADWAY OMIT OPPOSITE SIGNAGE (HAVE SIGNS ON BOTH SIDES OF ROADWAY APPROACHING WORK AHEAD).

SPEED (mph)	MINIMUM SIGN SPACING
25	150
30	200
35	250
40	350
45	550
50	600
55	700

LEGEND

- TRAFFIC DIRECTION
- SIGN STAND / LOCATION
- WORK SITE
- TRAFFIC DRUMS OR CONES
- ARROW BOARD
- TRUCK
- FLAGGER / with stop/slow paddle. 24" sign on 6' pole.









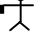
FLAGGING CONTROL AT 3-LEG INTERSECTION (3)
 TCP18

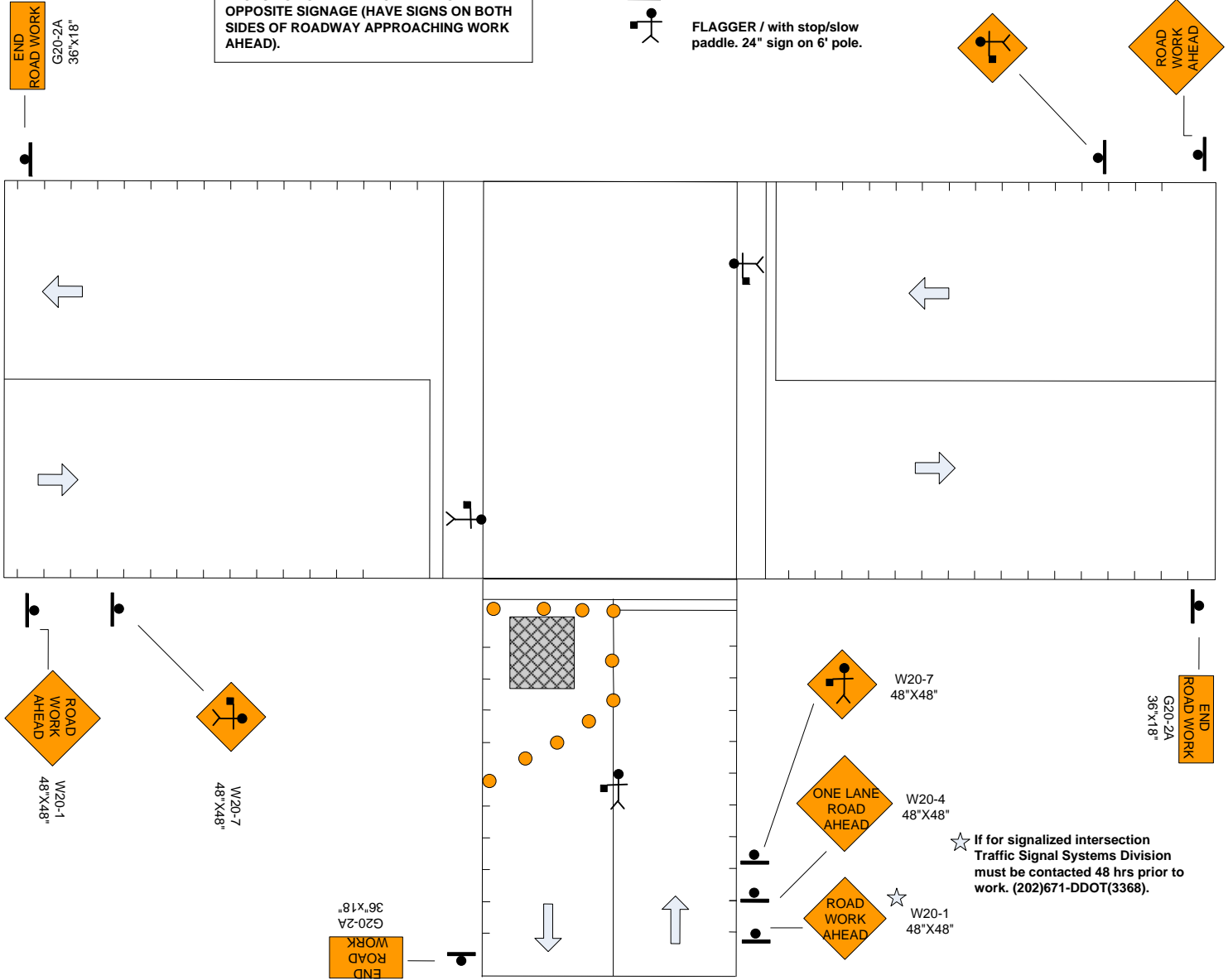
☆ If for signalized intersection Traffic Signal Systems Division must be contacted 48 hrs prior to work. (202)671-DDOT(3368).

STANDARD NOTES:
 PARKING IS TO BE RESTRICTED 72HRS. IN ADVANCE UNLESS THERE IS AN EMERGENCY. SIGNS SHALL BE INSTALLED PRIOR TO THE COMMENCEMENT OF ALL WORK AND REMOVED IMMEDIATELY AFTER COMPLETION OF ACTIVITIES.
 IF A SIGN IS NO LONGER REQUIRED IT WILL BE REMOVED.
 SIGNS SHALL BE CONSTRUCTED FROM DURABLE MATERIALS WHICH WILL NOT DETERIORATE UNDER NORMAL AND REPEATED OUTDOOR USE.
 SIGNS SHALL BE MOUNTED ON SPRING LOADED SIGN STANDS.
 THE SPACING OF TRAFFIC CONES IS TO BE 10'.
 IN CASE OF ONE WAY ROADWAY OMIT OPPOSITE SIGNAGE (HAVE SIGNS ON BOTH SIDES OF ROADWAY APPROACHING WORK AHEAD).

SPEED (mph)	MINIMUM SIGN SPACING
25	150
30	200
35	250
40	350
45	550
50	600
55	700

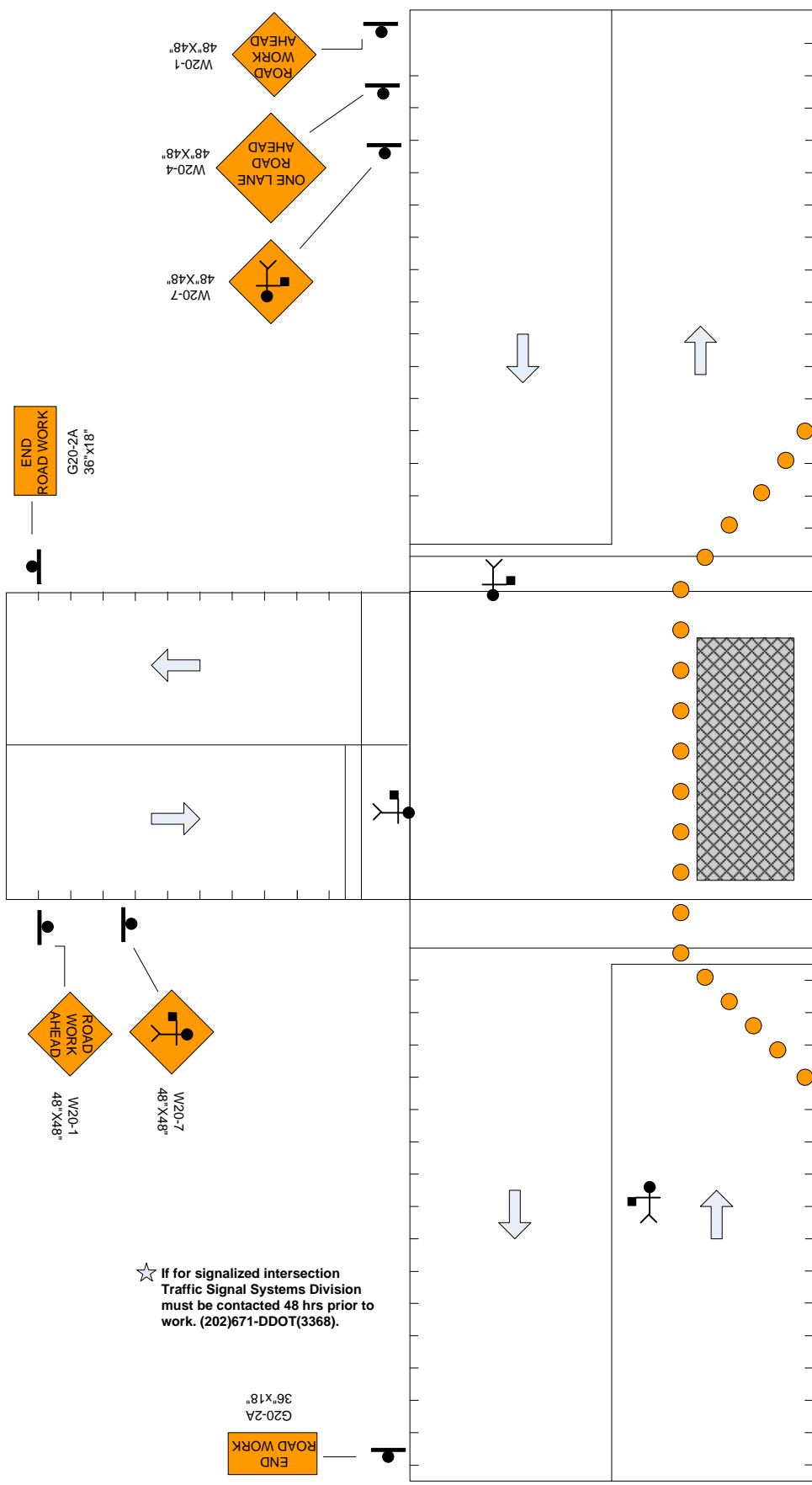
LEGEND

-  TRAFFIC DIRECTION
-  SIGN STAND / LOCATION
-  WORK SITE
-  TRAFFIC DRUMS OR CONES
-  ARROW BOARD
-  TRUCK
-  FLAGGER / with stop/slow paddle. 24" sign on 6' pole.



☆ If for signalized intersection Traffic Signal Systems Division must be contacted 48 hrs prior to work. (202)671-DDOT(3368).

FLAGGING CONTROL AT 3-LEG INTERSECTION (4)
 TCP19



END ROAD WORK
G20-2A
36"x18"

ROAD WORK AHEAD
W20-1
48"x48"

ONE LANE ROAD AHEAD
W20-4
48"x48"

ROAD WORK AHEAD
W20-7
48"x48"

- LEGEND**
- TRAFFIC DIRECTION
 - SIGN STAND / LOCATION
 - WORK SITE
 - TRAFFIC DRUMS OR CONES
 - ARROW BOARD
 - TRUCK
 - FLAGGER / with stop/slow paddle. 24" sign on 6' pole.

SPEED (mph)	MINIMUM SIGN SPACING
25	150
30	200
35	250
40	350
45	550
50	600
55	700

STANDARD NOTES:
 PARKING IS TO BE RESTRICTED 72HRS. IN ADVANCE UNLESS THERE IS AN EMERGENCY. SIGNS SHALL BE INSTALLED PRIOR TO THE COMMENCEMENT OF ALL WORK AND REMOVED IMMEDIATELY AFTER COMPLETION OF ACTIVITIES.
 IF A SIGN IS NO LONGER REQUIRED IT WILL BE REMOVED.
 SIGNS SHALL BE CONSTRUCTED FROM DURABLE MATERIALS WHICH WILL NOT DETERIORATE UNDER NORMAL AND REPEATED OUTDOOR USE.
 SIGNS SHALL BE MOUNTED ON SPRING LOADED SIGN STANDS.
 THE SPACING OF TRAFFIC CONES IS TO BE 10'.
 IN CASE OF ONE WAY ROADWAY OMIT OPPOSITE SIGNAGE (HAVE SIGNS ON BOTH SIDES OF ROADWAY APPROACHING WORK AHEAD).

☆ If for signalized intersection Traffic Signal Systems Division must be contacted 48 hrs prior to work. (202)671-DDOT(3368).

END ROAD WORK
G20-2A
36"x18"

ROAD WORK AHEAD
W20-1
48"x48"

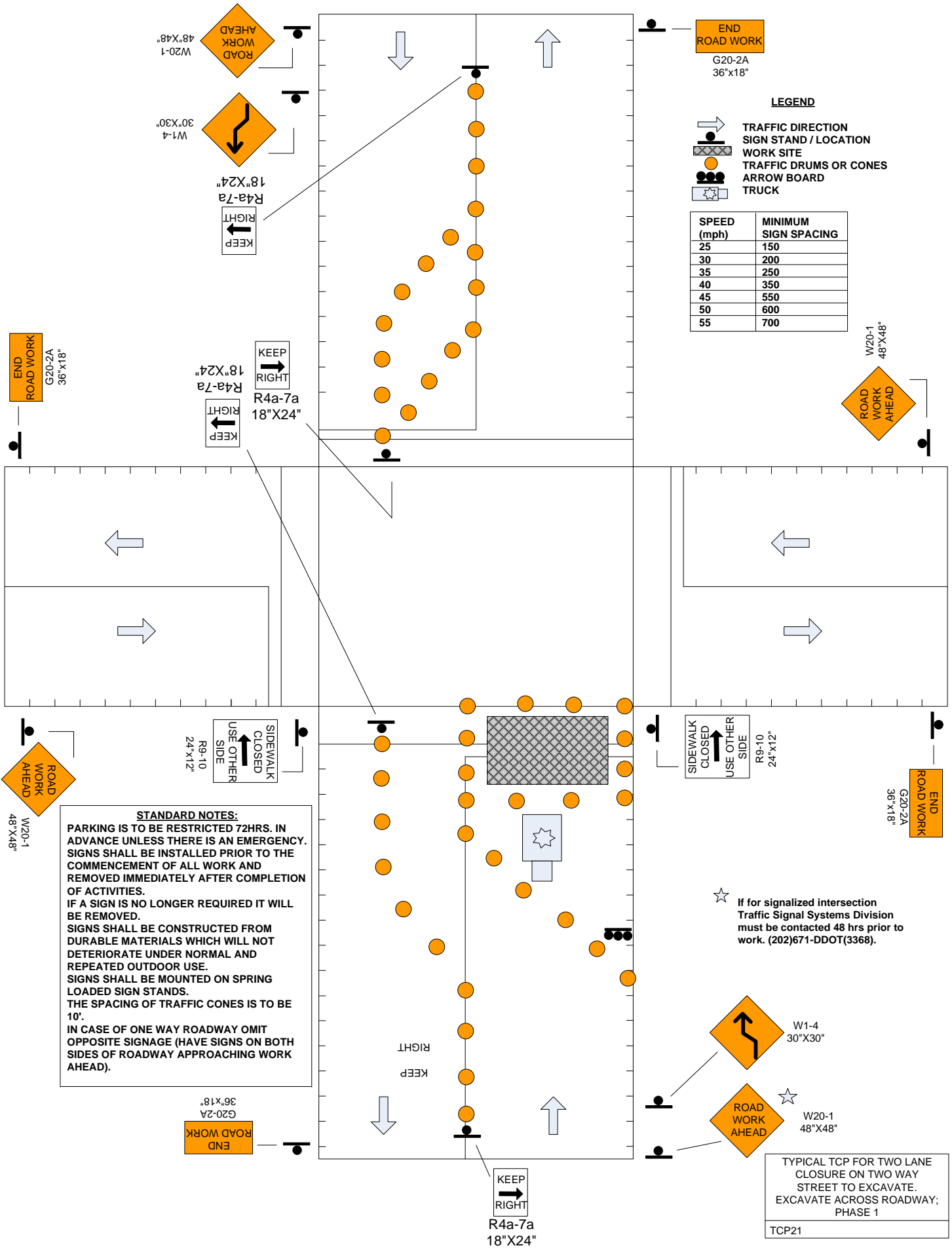
ROAD WORK AHEAD
W20-7
48"x48"

ROAD WORK AHEAD
W20-1
48"x48"

ONE LANE ROAD AHEAD
W20-4
48"x48"

ROAD WORK AHEAD
W20-7
48"x48"

FLAGGING CONTROL AT 3-LEG INTERSECTION FAR-SIDE CLOSURE
TCP20



LEGEND

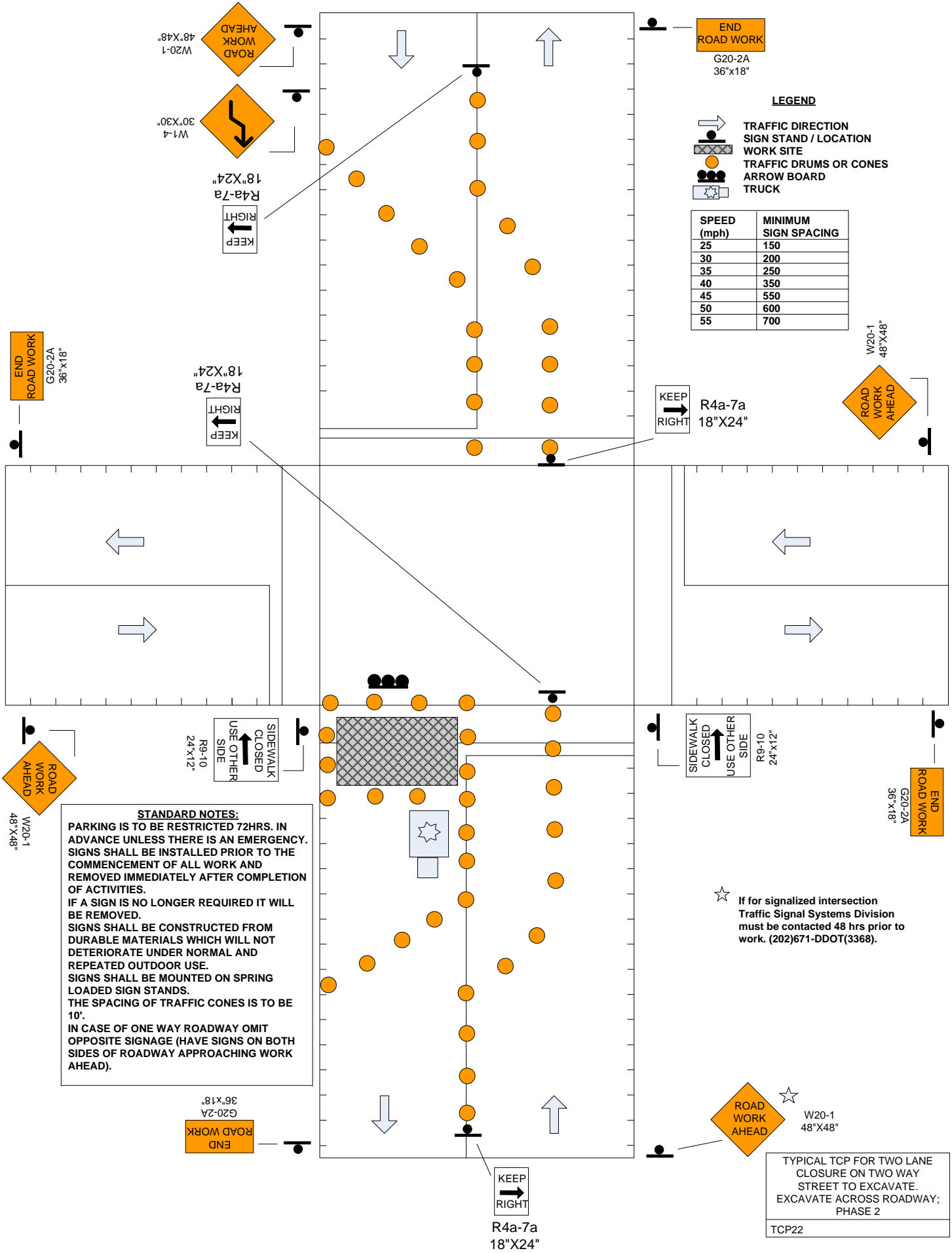
- TRAFFIC DIRECTION
- SIGN STAND / LOCATION
- WORK SITE
- TRAFFIC DRUMS OR CONES
- ARROW BOARD
- TRUCK

SPEED (mph)	MINIMUM SIGN SPACING
25	150
30	200
35	250
40	350
45	550
50	600
55	700

STANDARD NOTES:
 PARKING IS TO BE RESTRICTED 72HRS. IN ADVANCE UNLESS THERE IS AN EMERGENCY. SIGNS SHALL BE INSTALLED PRIOR TO THE COMMENCEMENT OF ALL WORK AND REMOVED IMMEDIATELY AFTER COMPLETION OF ACTIVITIES.
 IF A SIGN IS NO LONGER REQUIRED IT WILL BE REMOVED.
 SIGNS SHALL BE CONSTRUCTED FROM DURABLE MATERIALS WHICH WILL NOT DETERIORATE UNDER NORMAL AND REPEATED OUTDOOR USE.
 SIGNS SHALL BE MOUNTED ON SPRING LOADED SIGN STANDS.
 THE SPACING OF TRAFFIC CONES IS TO BE 10'.
 IN CASE OF ONE WAY ROADWAY OMIT OPPOSITE SIGNAGE (HAVE SIGNS ON BOTH SIDES OF ROADWAY APPROACHING WORK AHEAD).

☆ If for signalized intersection Traffic Signal Systems Division must be contacted 48 hrs prior to work. (202)671-DDOT(3368).

TYPICAL TCP FOR TWO LANE CLOSURE ON TWO WAY STREET TO EXCAVATE. EXCAVATE ACROSS ROADWAY; PHASE 1
 TCP21



LEGEND

- TRAFFIC DIRECTION
- SIGN STAND / LOCATION
- WORK SITE
- TRAFFIC DRUMS OR CONES
- ARROW BOARD
- TRUCK

SPEED (mph)	MINIMUM SIGN SPACING
25	150
30	200
35	250
40	350
45	550
50	600
55	700

STANDARD NOTES:
 PARKING IS TO BE RESTRICTED 72HRS. IN ADVANCE UNLESS THERE IS AN EMERGENCY. SIGNS SHALL BE INSTALLED PRIOR TO THE COMMENCEMENT OF ALL WORK AND REMOVED IMMEDIATELY AFTER COMPLETION OF ACTIVITIES.
 IF A SIGN IS NO LONGER REQUIRED IT WILL BE REMOVED.
 SIGNS SHALL BE CONSTRUCTED FROM DURABLE MATERIALS WHICH WILL NOT DETERIORATE UNDER NORMAL AND REPEATED OUTDOOR USE.
 SIGNS SHALL BE MOUNTED ON SPRING LOADED SIGN STANDS.
 THE SPACING OF TRAFFIC CONES IS TO BE 10'.
 IN CASE OF ONE WAY ROADWAY OMIT OPPOSITE SIGNAGE (HAVE SIGNS ON BOTH SIDES OF ROADWAY APPROACHING WORK AHEAD).

☆ If for signalized intersection Traffic Signal Systems Division must be contacted 48 hrs prior to work. (202)671-DDOT(3368).

TYPICAL TCP FOR TWO LANE CLOSURE ON TWO WAY STREET TO EXCAVATE. EXCAVATE ACROSS ROADWAY; PHASE 2
 TCP22